

## Autumnal Equinox Sets Stage for Debut Of 2018 Chevrolet Equinox Compact SUV

Chevrolet unveiled the new 2018 Equinox on Sept. 22, the day of the autumnal equinox.

"It is a fresh and modern SUV sized and designed to meet the needs of the compact SUV customer," said Alan Batey, Global Chevrolet president. "We've got the strongest truck business in the industry and we've reinvigorated our car lineup with Volt, Cruze and Malibu.

"We're applying the same customer focus to grow our crossover/SUV business – starting with the Chevrolet Equinox."

Today's compact SUV customers want a vehicle that meets all of their needs, from design, connectivity and safety perspectives, said GM spokeswoman Tara Kuhn.

The Equinox, she said, was designed to deliver on all fronts, starting with its fresh new design and new propulsion systems.

"The new Equinox's expressive exterior has a lean, muscular skin echoing the global Chevrolet design cues and sculpted shapes seen in the Volt, Malibu and Cruze," Batey said. "Extensive aero development in the wind tunnel influenced the sleek shape."

It is a richer, more detailed design featuring chrome trim on all

models and Malibu-inspired styling, Batey said. Projector-beam headlamps are standard, along with LED daytime running lamps. At the rear, horizontal taillamps emphasize the Equinox's wide stance, Batey said, while uplevel models feature LED taillamps.

"Customers who previewed the vehicle early on had a strong emotional response to the sleek and sophisticated exterior design," said John Cafaro, executive director, GM Design. "Those same themes are carried through

to the interior, making the space beautifully intuitive."

The interior takes advantage of the Equinox's new architecture to offer a down-and-away instrument panel, while a low windshield base provides a commanding outward view, Cafaro said.

New elements such as available denim-style seat fabric blend high style with high durability, while a new "kneeling" rear seat enhances functionality, Cafaro said.

With it, the bottom cushions tilt

CONTINUED ON PAGE 3



2018 Chevrolet Equinox



High-strength steel is major contributor to Pacifica's crashworthiness.

## 'We Know What's Important To Minivan Buyers' – Kuniskis

The 2017 Chrysler Pacifica has earned a rating of Top Safety Pick+ for 2016 from the Insurance Institute for Highway Safety (IIHS).

The designation applies to any 2017 Chrysler Pacifica produced after August 2016, said Fiat Chrysler spokesman Eric Mayne.

The achievement marks yet another minivan milestone for Fiat Chrysler, Mayne said. He also noted that the company pioneered the segment more than 30 years ago.

"Having sold more than 14 mil-

lion minivans since inventing the segment in 1983, we know what's important to minivan buyers," said Tim Kuniskis, head of Passenger Car Brands – FCA North America.

"The 2017 Chrysler Pacifica is the sum of all the knowledge we've accumulated about minivans and the people who are proud to own them. Among the things we know – safety is one of the most important purchase reasons and achieving the Top

CONTINUED ON PAGE 4



Ford is inviting Girl Scouts to participate in track car racing.

## Ford Teams with Girl Scouts To Advance STEAM Interest

It's been said that love of learning and science starts when one is young.

That's why Ford Motor Company is collaborating with four Girl Scouts Councils on a program that offers avenues for elementary school students to explore Science, Technology, Engineering, Arts and Mathematics (STEAM)-related fields.

Girls' Fast Track Races, said Ford spokeswoman Anika Salceda-Wycoco, is providing hands-on experience in vehicle engineering and design to 200 Brownies and 200 Juniors from each of the participating councils – Tropical Florida, Southeastern Michigan, Northeast Texas and Northern New Jersey.

Through the program, young girls are given the opportunity to learn about automotive science and engineering by building their own track race cars.

"We believe that all young chil-

dren have an aptitude for technical subjects," said Tracy Magee, Ford primary brand experiential manager.

"What's often lacking is the encouragement and additional support to succeed.

"Ford is deeply committed to education, and through creative programs such as the Girls' Fast Track Races, we hope to spark excitement among the youth and inspire them to pursue future careers in high-tech fields."

Ford's newly launched STEAM Experience works with long-standing Ford programs and outside organizations to help unify, shine a light on, and expand opportunities that inspire and enable students to pursue careers in STEAM fields, Salceda-Wycoco said.

"It serves as a hub for creativity and learning," she said.

CONTINUED ON PAGE 2

## GM Seeks 100 Percent Renewable Energy

GM believes that it's possible that power can be in the company's own hands – electric power, that is.

General Motors plans to generate or source all electrical power for its 350 operations in 59 countries with 100 percent renewable energy – such as wind, sun and landfill gas – by 2050.

"Establishing a 100 percent renewable energy goal helps us better serve society by reducing environmental impact," said GM Chairman and CEO Mary Barra. "This pursuit of renewable energy benefits our customers and communities through cleaner air while strengthening our business through lower and more stable energy costs."

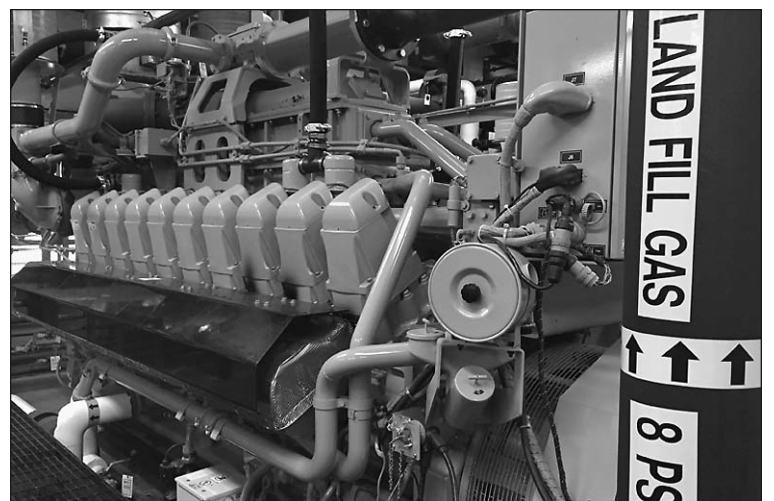
This new renewable energy goal, along with the pursuit of electrified vehicles and efficient manufacturing, is part of the company's overall approach to strengthening its business, improving communities and addressing climate change, Barra said.

## GM Boasts Price, Mileage of New Chevy Bolt EV

When GM announced that the company was going to build the Bolt, GM CEO Mary Barra said the EV would be capable of going the distance and be affordable. Now, Chevrolet says it's keeping its promise.

GM revealed on Sept. 21 that the Bolt EV's base Manufacturer's Suggested Retail Price is set at \$37,495, including destination charge.

CONTINUED ON PAGE 5



GM's Orion Plant produces energy from renewable landfill gas.

GM is also joining RE100, a global collaborative initiative of businesses committed to 100 percent renewable electricity, working to increase demand for clean power.

In 2015, GM required 9 terawatt hours of electricity to build its vehicles and power its offices,

technical centers and warehouses around the world, said GM spokeswoman Laura Toole.

To meet its new renewable energy goal, GM will continue to improve the energy efficiency of its operations while transitioning to

CONTINUED ON PAGE 3



2017 Chevrolet Bolt EV

Detroit Auto Scene®

31201 Chicago Road South  
Warren, Michigan 48093

586-939-6800

Contact us:  
Info@DetroitAutoScene.com

Deadline: Thursday 5:00 p.m.  
for the next edition of Monday

William Springer II, publisher  
Lisa A. Torretta, operations  
Jim Stickford, news

Detroit Auto Scene is a registered  
trademark of Springer Publishing Co.

www.DetroitAutoScene.com

## Ford Teams With Girl Scouts for STEAM Interest

CONTINUED FROM PAGE 1

Girls' Fast Track Races – one of the many Ford STEAM Experiences – is designed to provide encouragement and motivation to the four participating councils as they work to build and race their own cars.

Here are Race details:

- Southeastern Michigan Council: 11 a.m., Oct. 15, Athletics Center O'Rena, Oakland University, Rochester Hills;
- Northeast Texas Council: 11 a.m., Oct. 29, Curtis Culwell Center, Garland, Texas;
- Tropical Florida Council: 12 p.m., Nov. 6, Fernandez Family Center, St. Thomas University, Miami Gardens, Fla.;
- Northern New Jersey: venue and time to be announced at a later date.

Ford knows diversity is imperative to future innovations, Salceda-Wycoco said.

"As an expert in engineering, Ford has a unique opportunity to bring this fun and educational experience to girls and the youth-at-large," said Magee.

Girls' Fast Track Races gives participants the opportunity to connect and compete at the highest level – all while sparking creativity to ensure a brighter future, not just for Ford, but for the entire community, Salceda-Wycoco said.

"Girl Scouts of Northeast Texas is excited to team up with Ford Motor Company, to inspire these members who are interested in science, technology, engineering and math," said Jennifer Bartkowski, CEO Girl Scouts of Northeast Texas.

"Girls need opportunities to expand their realm of what's possible. Through this collaboration, girls will get to explore STEAM concepts and careers as they design, test and race their own cars."

Johnette Hardiman, chair of the board of directors, Girl Scouts of Tropical Florida, said scouting builds courage, confidence and character. "Our girls want to make the world a better place," she said.

Ford's commitment to STEAM education is long-standing, Salceda-Wycoco said.

"For more than 30 years, Ford Motor Company has inspired young people to seek knowledge, be curious, solve problems and – like Henry Ford himself – make dreams of a better world come true.

"The company is committed to fostering interest in science, technology, engineering, the arts and math among American youth to help ensure the country can maintain its legacy of innovation and continue to thrive in a global economy."

Long-established programs like Ford Next Generation Learning and Ford High School Science and Technology Program give students opportunities for hands-on learning and mentorship, Salceda-Wycoco said.

EXTENDED SHOWROOM HOURS!

MON. Sept. 26th 8:30AM to 9:00PM

TUES. Sept. 27th 8:30AM to 9:00PM

WED. Sept. 28th 8:30AM to 9:00PM

THUR. Sept. 29th 8:30AM to 9:00PM

501 HUGEST SALE HOURS!

INCENTIVES AND BUSINESS ARE SO UNBELIEVABLE!

DICK HUVAERE'S WILL BE OPEN LATE 4 NIGHTS!

LARGEST 50 HOUR SALE EVER!

ABSOLUTELY BEST DEAL IS HERE! - PERIOD!

CLIP THESE VALUABLE HUVAERE EXCLUSIVE COUPONS!

CAN SAVE YOU UP TO \$100 A MONTH ON A 24-MONTH LEASE

EXCLUSIVE HUVAERE 1500 CREW CAB HEMI BONUS CASH \$2250

EXCLUSIVE HUVAERE SEPTEMBER TRADE-IN BONUS CASH \$2000

EXCLUSIVE HUVAERE SEPTEMBER BONUS CASH \$1800

Huvaere Has An Incredible 2016 Ram Inventory That Qualifies For The Lease Deal! 323 In Stock!

HOTTEST LEASE SPECIALS OF THE YEAR! YOUR CHOICE! RAM, COMPASS OR CHALLENGER! GREAT SELECTION!

#1 RAM STORE 2013/2014/2015 2016 RAM 1500 CREW CAB 4X4 BIG HORN 638 CREWS AVAILABLE

419 AVAILABLE 2017 JEEP COMPASS HIGH ALTITUDE 4X4

2016 DODGE CHALLENGER SXT NOT A MISPRINT!

CHRYSLER 2016 Chrysler 300 S AWD LEASE FOR \$118 24 Mos. \$1895 due C6-31279

2016 Chrysler 300 S LEASE FOR \$127 24 Mos. \$1495 due C6-31281

2016 Chrysler 300 S Alloy Edition LEASE FOR \$127 24 Mos. \$1395 due C6-31243

2016 Chrysler 300 S AWD Alloy Edition LEASE FOR \$117 24 Mos. \$1995 due C6-31199

ALL NEW 2017 CHRYSLER PACIFICA SALE PRICE \$22,975 or LEASE FOR \$169 24 Mos. \$1995 due C7-41040 \$1800 HUVAERE CASH!

ALL NEW 2017 CHRYSLER PACIFICA TOURING SALE PRICE \$23,542 or LEASE FOR \$198 24 Mos. \$1995 due C7-41008 \$1800 HUVAERE CASH!

ALL NEW 2017 CHRYSLER PACIFICA TOURING L SALE PRICE \$27,245 or LEASE FOR \$193 24 Mos. \$1995 due C7-41016 \$1800 HUVAERE CASH!

Jeep 2016 Patriot High Altitude LEASE FOR \$117 24 Mos. \$100 due J6-50063

2016 JEEP CHEROKEE LATITUDE 4X4 LEASE FOR \$154 24 Mos. \$1995 due J6-70569

2016 JEEP CHEROKEE ANNIVERSARY LEASE FOR \$199 24 Mos. \$1995 due J6-70455

2016 JEEP CHEROKEE LIMITED 4X4 LEASE FOR \$173 24 Mos. \$1995 due J6-70386

2016 JEEP RENEGADE 4X4 75TH ANNIV. EDITION LEASE FOR \$135 36 Mos. \$1995 due J6-80017

2016 JEEP RENEGADE LATITUDE LEASE FOR \$99 36 Mos. \$1995 due J6-80028

2016 JEEP RENEGADE LATITUDE 4X4 LEASE FOR \$110 36 Mos. \$1995 due J6-80029

2016 JEEP GRAND CHEROKEE LAREDO 4X4 LEASE FOR \$157 36 Mos. \$1995 due J6-20064

2016 JEEP GRAND CHEROKEE LIMITED 4X4 LEASE FOR \$229 36 Mos. \$1995 due J6-20012

2016 JEEP WRANGLER UNLIMITED SPORT 4X4 SALE PRICE \$27,567 J6-31152

DODGE 2016 Dodge Journey R/T LEASE FOR \$118 24 Mos. \$1895 due D6-00351

2016 Dodge Journey R/T AWD LEASE FOR \$108 24 Mos. \$1895 due D6-00322

2016 DODGE CHALLENGER HELLCAT SRT SALE PRICE \$65,785 D6-50004

2016 DODGE CHALLENGER RT PLUS SHAKER SALE PRICE \$35,362 D5-50061

2016 DODGE CHALLENGER RT CLASSIC SALE PRICE \$32,902 D5-50052

2016 DODGE CHARGER SXT AWD LEASE FOR \$147 36 Mos. \$1995 due D6-71029

2016 GRAND CARAVAN SXT SALE PRICE \$20,995 D6-40615

2017 GRAND CARAVAN SE 29E SALE PRICE \$21,176 D7-40502

2016 DODGE DURANGO SXT AWD LEASE FOR \$229 24 Mos. \$1995 due D6-30174

2016 DODGE DURANGO LIMITED LEASE FOR \$361 36 Mos. \$1995 due D6-30183

DICK HUVAERE'S RICHMOND

CHRYSLER DODGE Jeep RAM SRT

67567 S. Main St. Richmond

866-610-0090

Online at: DriveEnvy.com

SALE HOURS: Mon & Thurs 8:30-9:00 Tue, Wed & Fri 8:30-6:00 Sat 9:00-4:00

Jeep CELEBRATION EVENT POWER DAYS

Picture may not reflect actual vehicle. \*The FCA US LLC (Formerly Chrysler Group) Employee Advantage Purchase program sale prices and lease payments quoted. Just add tax, title, doc fee and destination charge. \*\*24, 27, 30, 36 month FCA US LLC employee leases. The amount due on all leases require amount due plus monthly tax, cap cost reduction tax, first payment, title, plate, doc fee and destination charge. Security deposit is waived on all lease payments. Lease payments are \$10,000 miles per year. 20 cents per mile thru July or 25 cents thru Chrysler Capital for excess mileage. Customer must qualify for 1 or 5 year credit approval. Payments subject to change due to lower approved credit tier. Banks may require to prove income and residency for credit approval. Customer is responsible for excess wear and tear. Total deferred price is the sum of the purchase price, plus doc fee, plate fee, sales tax, and accrued finance charges over the term of the lease. All rebates and program monies assigned back to dealer. All prices and lease payments are based off FCA US LLC incentives thru the Great Lakes Business Center. Rebates as retail consumer cash, lease cash, lease loyalty, military, trade assist cash, finance bonus cash and all other Great Lakes offers will be applied. The dealer invoice amount is not a net factory price to dealer. Customers may not qualify for all offers, incentives, discounts or financing offers. See dealer for qualifications and complete details. Exclusive Huvaere new car cash coupon has been applied to all sale and lease payments in this ad. Vehicle sale prices include Chrysler Capital bonus cash-must finance thru Chrysler Capital. Ram leases include Great Lakes Truck Conquest Bonus cash. \*Sale prices include lessee loyalty retail bonus cash, customer must qualify. 1.84 month buy, 2.99% APR with approved credit.

HOTTEST RAM SPECIAL IS NOW! BUY OR LEASE! 2016 RAM 1500 CREW CAB 4X4

BUY \$46,845 MSRP - \$5,100 FCA EMPLOYEE DISCOUNT - \$9,369 20% SELECT BONUS CASH - \$2,250 HUVAERE BONUS CASH

LEASE \$47,620 MSRP - \$5,250 FCA EMPLOYEE DISCOUNT - \$7,750 IDL BONUS CASH - \$2,250 HUVAERE BONUS CASH - \$1,000 RETURNING LEASE - \$1,000 SELECT BONUS CASH - \$750 GIL BONUS CASH

\$30,126\* SALE PRICE! \$16,719 OFF OF MSRP!

\$18,000 IN REBATES & DISCOUNTS!

INCREDIBLE SEPTEMBER LEASE SPECIAL! SEPTEMBER IS THE MONTH TO LEASE A RAM! 2016 1500 CREW CAB 4X4 BIG HORN

LEASE FOR \$121 24 Mos. \$995 due

24 Mo 1 Pay LEASE \$3532\*\*

24 Mo 1 Pay LEASE \$3842\*\*

SEPTEMBER IS THE MONTH TO LEASE A RAM! 2016 1500 CREW CAB 4X4 BIG HORN

LEASE FOR \$138 24 Mos. \$995 due

24 Mo 1 Pay LEASE \$2799\*\*

2016 RAM 1500 CREW CAB 4X4 OUTDOORSMAN

24 Mo 1 Pay LEASE \$4433\*\*

2016 RAM 1500 CREW CAB 4X4 SPORT

24 Mo 1 Pay LEASE \$4470\*\*

2016 RAM 1500 CREW CAB 4X4 REBEL

24 Mo 1 Pay LEASE \$52,740 MSRP

2016 RAM 1500 CREW CAB 4X4 LARAMIE

24 Mo 1 Pay LEASE \$3720\*\*

SEPTEMBER LEASE SPECIALS!

2016 Dodge Journey R/T LEASE FOR \$118 24 Mos. \$1895 due D6-00351

2016 Dodge Journey R/T AWD LEASE FOR \$108 24 Mos. \$1895 due D6-00322

2016 DODGE CHALLENGER HELLCAT SRT SALE PRICE \$65,785 D6-50004

2016 DODGE CHALLENGER RT PLUS SHAKER SALE PRICE \$35,362 D5-50061

2016 DODGE CHALLENGER RT CLASSIC SALE PRICE \$32,902 D5-50052

2016 DODGE CHARGER SXT AWD LEASE FOR \$147 36 Mos. \$1995 due D6-71029

2016 GRAND CARAVAN SXT SALE PRICE \$20,995 D6-40615

2017 GRAND CARAVAN SE 29E SALE PRICE \$21,176 D7-40502

2016 DODGE DURANGO SXT AWD LEASE FOR \$229 24 Mos. \$1995 due D6-30174

2016 DODGE DURANGO LIMITED LEASE FOR \$361 36 Mos. \$1995 due D6-30183



## Autumnal Equinox Sets Stage for Debut Of 2018 Chevrolet Equinox Compact SUV

CONTINUED FROM PAGE 1

forward when the split-folding seatbacks are lowered, allowing a flat floor for easier loading.

The 2018 Equinox offers technology that helps keep passengers safe, comfortable and connected, Kuhnen said.

Chevrolet's latest connectivity technologies are front and center, including 7- and 8-inch-diagonal MyLink infotainment systems designed to support Apple CarPlay and Android Auto, as well as an available OnStar 4G LTE Wi-Fi hotspot.

Apple CarPlay and Android Auto compatibility is subject to their terms, privacy statements and data plan rates, as well as a compatible smartphone, said Kuhnen.

The Equinox offers a comprehensive suite of available active safety technologies and adaptive crash-avoidance features that provide ease of use and peace of mind on the road, Kuhnen said.

Available advanced active safety features to enhance driver awareness on the road include radar- and camera-based adaptive technologies that can provide alerts to potential crash threats, allowing the driver to react and make changes to avoid them, including new Safety Alert Seat, new Surround Vision, new Forward Collision Alert with Following Distance Indicator, new Low-Speed Forward Automatic Braking, new Lane Keep Assist with Lane Departure Warning, new Rear Seat Reminder, Lane Change Alert with Side Blind Zone Alert and Rear Cross Traffic Alert.

A range of three turbocharged engines – including the compact SUV segment's first turbo-diesel in North America – provides customers more choices when it comes to performance, efficiency and capability, Kuhnen said.

They include a 1.5L turbo, a 2.0L turbo – matched with GM's new nine-speed automatic transmission – and a 1.6L turbo-diesel.

"With three choices, customers can select an engine that offers more of the attributes that are important to them: efficiency, performance and capability," said Dan Nicholson, vice president, Global Propulsion Systems. "The advantage for each is the power of a larger engine and the efficiency of a smaller engine."

The new Equinox is the first



Equinox's horizontal taillamps 'emphasize wide stance' – GM's Batey

Chevrolet model in North America to use an all-turbocharged, multi-engine powertrain lineup, Kuhnen said. That includes the 1.6L turbo-diesel that will offer customers excellent efficiency and capability, Nicholson said.

"It is an all-new SUV from the ground up and one that takes on the industry's biggest competitors with a stronger architecture, greater efficiency and more technology," said Rick Spina, executive chief engineer. "And it looks great doing it."

Additional vehicle highlights include being about 400 pounds lighter than the current model – a 10 percent weight reduction, Kuhnen said.

Equinox sales have reached more than 2 million since its launch in 2004, and it's Chevrolet's second-best retail selling vehicle, after the Silverado, Kuhnen said.

The 2018 Equinox goes on sale in the first quarter of 2017 in North America.

It rolls out to approximately 115 additional global markets later in the year.

It will be assembled at three plants in North America – Ingersoll in Ontario and two others as yet unnamed.

"We confirmed in 2015 that Ingersoll would get the Equinox, and we haven't confirmed the other two plants," Kuhnen said.

## GM Seeks Renewable Energy

CONTINUED FROM PAGE 1

clean sources for its power needs.

Today, GM saves \$5 million annually from using renewable energy, a number it anticipates will increase as more projects come online and the supply of renewable energy increases, Toole said.

In addition, the company anticipates costs to install and produce renewable energy will continue to decrease, resulting in more bottom-line returns.

The new renewable energy commitment builds on GM's previous goal to promote the use of 125 megawatts of renewable energy by 2020, Toole said. The company expects to exceed this when two new wind projects come online later this year to help power four manufacturing operations.

"This bold and ambitious commitment from General Motors will undoubtedly catch the attention of the global automotive industry," said Amy Davidsen, North America executive director at The Climate Group.

"GM has already saved millions of dollars by using renewable energy, and like any smart business that recognizes an investment opportunity, they want to seize it fully. We hope that through this leadership, other heavy manufacturing companies will be inspired to make the switch, too."

GM is in the process of adding 30 megawatts of solar arrays at two facilities in China, Toole said. Its Jinqiao Cadillac assembly plant in Shanghai will feature 10 megawatts of rooftop solar and 20 megawatts of solar carports, which will cover 8,100 parking spaces at the company's vehicle distribution center parking lot in Wuhan.

GM has pioneered the use of renewable energy for more than 20 years, said Toole, saving \$80 million to date.

The company has 22 facilities with solar arrays, three sites using landfill gas and four that will soon benefit from wind. This experience will help GM scale renewable energy use to all facilities globally.

GM is in a unique position to meet this renewable energy goal given its electric vehicle battery expertise, Barra said. Energy storage can ultimately address the intermittency or reliability of wind and solar energy. GM is now using Chevrolet Volt batteries for energy storage at its Milford Proving Ground data center office.

Collaborating to make renewable energy more accessible, Toole said, GM is joining 69 companies that have made the RE100 pledge. These organizations, she said, work to identify barriers to buying clean energy and develop solutions to meet the growing demand.

### Shop Floor to Top Floor

**FERRIS STATE UNIVERSITY**  
Metro Detroit

Complete your bachelor's degree quickly and locally.

Ferris offers classes on-site at Macomb Community College and online. Transfer credits you've already earned. Learn the skills and gain the confidence to step up to a more challenging, higher paying position.

**Bachelor's degrees available locally:**  
Business Administration-Professional Track  
Industrial Technology and Management

Visit [ferris.edu/statewide](http://ferris.edu/statewide) or call (586) 445-7150 for more information.

## WARREN URGENT CARE

8am-10pm • 7 Days a week • 365 Days a Year

"Bringing Quality Urgent Care To Your Neighborhood"

*"We Care"*

### URGENT CARE FOR ACCIDENTS AND INJURY

**ADULT & PEDIATRIC ILLNESS**  
Digital X-Rays, EKG and Lab Work, On-Site Lab Service, Strep, Mono, Pregnancy & Urine Testing, Vaccinations, Sports & School Physicals, Occupational Medicine, Work-Related Injuries, Pre-Hire Physicals (BAT & Urine Screening)

**SPECIAL ON SPORTS PHYSICAL \$25.00** State-of-the-Art Facility

**586-276-8200**

31700 Van Dyke • Warren, MI 48093

On Van Dyke Rd., between 13 & 14 Mile in St. John's Windemere Park

OTHER CONVENIENT LOCATIONS:

**Woodland Urgent Care** 22341 W. 8 Mile Road Detroit 313-387-8700

**N. East Macomb Urgent Care** 43900 Garfield, Suite 121 Clinton Township 586-868-2600

**FLU SHOTS**

**ATTENTION**  
Chrysler, GM, Ford Employees, we're within 2 miles of your plants

**HAP & BCN**  
**NO Referrals Needed!**  
[www.warrenurgentcare.com](http://www.warrenurgentcare.com)

## OCC Schedules Recycling Day For October 1

Area folks who would like to get rid of their electronic waste can take it to an Oakland Community College-sponsored recycling event at the Highland Lakes campus, 7350 Cooley Lake Road, Waterford, on Saturday, Oct. 1, from 9 a.m. to 1 p.m.

These items will be accepted: computers, laptops, printers, copiers, cell phones, office phones, microwaves, chargers, TVs (no tube TVs), cable boxes, lithium ion and car batteries, hard drives, industrial equipment, personal electronics, radios, computer monitors, audio equipment, routers, circuit boards, cables, wires, cords and home appliances.

For further information, call 248-942-3243.

## Learn How To Get The Most From Your Retirement Savings

### COMPLIMENTARY RETIREMENT READINESS KIT

**RETIRE SMARTER**

### Two Ways to Receive Your Free Kit

By Phone	Download Now
Call (810) 593-1624	<a href="http://KaydanWealthPresents.com">KaydanWealthPresents.com</a>



A black and white photograph of a Chrysler Pacifica driving on a coastal road. The vehicle is shown from a front-three-quarter angle, moving towards the left. The background features a rocky coastline with palm trees and buildings under a cloudy sky. The car's design, including its grille and wheels, is clearly visible.

**2017 Chrysler Pacifica minivan**

## ***'We Know What's Important To Minivan Buyers'—Kuniskis***

CONTINUED FROM PAGE 1

Safety Pick+ rating helps to establish Pacifica as the segment leader."

While the new Pacifica achieves top scores for crash-worthiness, Kuniskis said the best safety features are the ones that help drivers avoid collisions in the first place.

The Chrysler Pacifica's Automatic Emergency Braking (AEB) system earns a rating of "superior," the highest possible grade that IIHS awards for this technology, Kuniskis said.

The Pacifica's system is called Forward Collision Warning-Plus. It features sensor-fusion technology, which combines the particular attributes of radar sensors and cameras for greater precision.

The system only responds when camera and radar agree that a frontal impact appears imminent.

System response comprises audible and visual driver warnings and/or AEB, Kuniskis said. No other minivan features sensor-fusion technology; competitive systems employ either cameras or radar sensors.

Sensor-fusion, once reserved for luxury-segment vehicles, is the technology of choice at FCA US, says Mike Dahl, head of Vehicle Safety and Regulatory Compliance.

"As AEB capability proliferates across our vehicle lineup, we are committed to using sensor-fusion technology," Dahl says.

"It is a significant stepping stone in our exploration of autonomous-vehicle development, the next horizon for occupant safety."

Material choice is a key contributor to the new Pacifica's outstanding crashworthiness. High-strength steel accounts for 72 percent of its body structure, 38 percent of which is Advanced High-Strength Steel (AHSS), Mayne said.

High-strength materials engi-

neered into the new Pacifica, such as press-hardened steel and AHSS, which is up to 300 percent stronger than conventional "mild" steel, afford structural benefits while also delivering fuel-saving weight reduction. The new Chrysler Pacifica is 250 pounds lighter than the vehicle it replaces, and its body structure accounts for more than half of that difference, Mayne said.

IIHS judges wrote of the 2017 Pacifica that it "is the first minivan to earn a 2016 Top Safety Pick+ award from the Insurance Institute for Highway Safety."

IIHS judges, in the press release to the public, were quick to note that "the minivan, which replaces the Chrysler Town & Country, has good ratings in the Institute's five crashworthiness tests."

## Royal DSM Opens Expanded \$5M Tech Center

Royal DSM, a global science-based company active in health, nutrition and materials, opened its expanded \$5 million research and technology center for DSM Engineering Plastics on Sept. 23 in the Detroit suburb of Troy.

The opening of the Troy Research & Technology Center, said DSM spokesman Hugh Welsh, strengthens DSM Engineering Plastics' product development and application development capabilities in North America, and will enable it to better collaborate with its customers.

The center will offer a variety of material characterization techniques.

Some of the new facility's features include:

- Broad range of mechanical testing capabilities;
- Analytical techniques including microscopy;
- Extensive testing capabilities on aging and chemical resistance of materials.

# MIKE RIEHL'S ROSEVILLE TRUCK CENTER

USE YOUR UAW  
RETIRES VOUCHER  
FOR UP TO \$1000

POWER  
DAYS

Jeep  
CELEBRATION EVENT

2016 RAM  
PROMASTER CITY WAGON

SALE PRICE **\$17,777\***  
MSRP 25,920

2016 RAM  
2500 SLT CREW CAB 4X4

SALE PRICE **\$36,498\***  
MSRP 50,750

**INCLUDES  
RETURNING  
LESSEE**

2016 RAM  
1500 SLT BIG HORN QUAD CAB 4X4

SALE PRICE **\$29,997\***  
MSRP 47,735

2016 RAM  
2500 LARAMIE CREW CAB 4X4

SALE PRICE **\$39,997\***  
MSRP 56,295

FOR **YOUR BEST DEAL**, IT'S *Mike Riehl's* [www.riehlscars.com](http://www.riehlscars.com)

# ROSEVILLE

**NEED FINANCING?**  
[www.RosevilleEZLoan.com](http://www.RosevilleEZLoan.com)

Get  
Pre-Approved  
in Seconds!

Mon & Thur 8:30AM-8:00PM • Tue, Wed & Fri 8:30AM-6:00PM  
• Saturday 10:00AM-3:00PM  
**25800 GRATIOT • ROSEVILLE (855) 711-7673**

Must qualify for Chrysler Employee Advantage discount for all sale prices and lease payments. \*Plus tax, title, license, CVR and doc fee and destination charge. \*\*All leases based on 10,000 miles per year. Plus tax, title, license and doc fee and destination charge. No security deposit required. Must qualify for preferred credit rating, not everyone will qualify. All rebates assigned to dealer. Save even more with military rebate. Sale prices and lease payments include consumer cash rebate, lease cash, and Chrysler Capital Bonus Cash. Must finance through Chrysler Capital. Not everyone will qualify subject to credit approval. Pictures may not represent actual vehicles. Must take delivery from dealer inventory by 9/30/2016.

**WE DO HOUSE CALLS OR COME SEE US...**  
***Before You Trade-In or Sell Your Car***

**JIM DOUGLAS  
AUTO SALES**



Buyer & Seller of Clean Vehicles Since 1975!

***You'll Get Your Tax Break  
Plus 100's if not 1,000's More***

**248.332.8326**

1153 Baldwin Rd • Pontiac • [www.jimdouglasautosales.com](http://www.jimdouglasautosales.com)





2017 Bolt EV's interior

## GM Boasts Price of Bolt EV

CONTINUED FROM PAGE 1

Depending on individual tax situations, customers may receive an available federal tax credit of up to \$7,500 for a net value of \$29,995, said GM spokesman Fred Ligouri.

"Value is a hallmark for Chevrolet and the pricing of the Bolt EV proves we're serious about delivering the first affordable EV with plenty of range for our customers," said Alan Batey, president of GM North America and leader of Global Chevrolet.

Bolt EV buyers will find range, cargo space, technology and safety features standard in a great vehicle with crossover proportions, said Batey.

"The thrill of driving an EV, along with the sales and service support of a nationwide network of Bolt EV certified Chevrolet dealers," he said, "makes the Bolt EV a smart buy for any customer."

Batey said "the well-equipped LT trim" starts at \$37,495 and comes with standard features that include, among others, Regen on Demand steering wheel paddle, rear vision camera, 10.2-inch diagonal color touch screen

and MICHELIN Self-sealing tires (in certain circumstances).

The top trim Premier includes all LT equipment plus additional standard features such as leather-appointed seats, front and rear heated seats, surround camera and rear camera mirror, Batey said.

It will be available at select dealerships in late 2016.

## Tesla Update May Help Avoid Crash

DETROIT (AP) – Tesla Motors customers will get enhanced radar and other features in an over-the-air software update that started Sept. 21.

The update makes the Model S sedan and Model X SUV rely more reliant on radar than cameras when driving in Tesla's semi-autonomous Autopilot mode. Teslas made after October 2014 have radar.

Tesla CEO Elon Musk says the change should help avoid crashes like the one that killed a driver in Florida in May. The driver was using Autopilot, crashed into a tractor-trailer that Tesla's camera failed to detect.

# VYLETTEL

## 0% FOR 72 MONTHS ON 2016 GMC YUKONS

- Offer ends Monday, September 12th -

<b>GMC</b> WE ARE PROFESSIONAL GRADE <b>2015 GMC TERRAIN</b> DENALI • FWD <b>\$29,995*</b> <small>WAS \$39,605 NEW!</small> 	<b>ALL NEW 2017 GMC ACADIA</b> FWD • SLE-1 <b>\$289*</b> <small>36 MONTH LEASE FOR ONLY \$289 10K PER YEAR</small> 	<b>EXPERIENCE THE NEW BUICK</b> <b>ALL NEW 2017 BUICK ENCLAVE</b> FWD • CONVENIENCE <b>\$279*</b> <small>36 MONTH/10K PER YEAR LEASE FOR ONLY \$1,873 DUE AT SIGNING</small> 	<b>ALL NEW 2016 BUICK REGAL</b> FWD • PREMIUM II GROUP <b>\$104*</b> <small>24 MONTH/9,544 PER YEAR LEASE FOR ONLY \$1,755 DUE AT SIGNING DEMO SPECIAL</small> 
<b>2017 GMC TERRAIN</b> FWD • SLE-1 <b>\$185*</b> <small>24 MONTH LEASE FOR ONLY \$185 10K PER YEAR</small> 	<b>2016 GMC SIERRA</b> 1500 • 4WD • DOUBLE CAB <b>\$139*</b> <small>24 MONTH LEASE FOR ONLY \$139 10K PER YEAR 42,165 MSRP</small> 	<b>ALL NEW 2016 BUICK LACROSSE</b> 1SH • SPORT TOURING <b>\$209*</b> <small>39 MONTH/10K PER YEAR LEASE FOR ONLY \$1,838 DUE AT SIGNING</small> 	<b>ALL NEW 2016 BUICK ENCORE</b> AWD • SPORT TOURING <b>\$179*</b> <small>39 MONTH/10K PER YEAR LEASE FOR ONLY \$1,695 DUE AT SIGNING</small> 
<b>2015 GMC SIERRA</b> 1500 • 4WD • DOUBLE CAB • SLE <b>\$35,516*</b> <small>WAS \$42,485 SAVE OVER \$6,969 OFF LIST</small> 	<b>ONLY ONE LEFT 15% OFF LIST</b> <b>6" CHROME ASSIST STEPS</b> 	<b>ALL NEW 2016 BUICK CASCADA</b> PREMIUM • 1SP SUMMER FUN! ALL NEW BUICK CONVERTIBLE <b>\$289*</b> <small>39 MONTH/10K PER YEAR LEASE SPECIAL \$1,817 DUE AT SIGNING</small> 	

VISIT OUR WEBSITE TO SEARCH FOR MORE VEHICLE SELECTIONS AT [WWW.VYLETTEL.NET](http://WWW.VYLETTEL.NET)

**40755 Van Dyke • Sterling Heights • 586.977.2800**

**WWW.VYLETTEL.NET** SALES: Sun CLOSED; M, TH 8:30am-9pm; T, W, F 8:30am-6pm; SAT 10am-3pm  
SERVICE: Sun CLOSED; M, TH 7am-8pm; T, W, F 7am-6pm; Sat 8am-1pm

\*All lease/purchase examples are figured with GM employee pricing, lease conquest rebate qualifies to customers who have a non GM lease in household set to expire within 365 days of new lease/purchase delivery date. \*Buick/GMC lease loyalty rebate applies to customers who have a current Buick/GMC lease in house hold. IVC certificates may apply to lease/ purchase examples and are good while dealer supply last. Exp. 9/30/16

# LAST WEEK OF THE MONTH, ALMOST ANY DEAL GOES

## CALL BEFORE YOU PICK UP YOUR NEW ONE TO BE SURE YOU ARE GETTING THE LOWEST PRICE

Please call with the vehicle you desire and you will be delighted with the payment.

**CALL BRUCE LITVIN** - 24/7 & 365 -  
**CELL # 1-586-405-5175**  
**blitvin@lunghamer.com**

40 YEARS OF QUALITY SERVICE

# 1-888-665-5438

## Joe Lunghamer

475 SUMMIT DRIVE • 248-292-2502 • 5825 HIGHLAND RD. (M59) • WATERFORD

☺ We guarantee the lowest price or it's free! ☺ We guarantee the lowest price or it's free! ☺

## HOTTEST DEALS of the Year at buff whelan chevrolet

**586-274-0396**

**2016 MALIBU 1LT**

NO SECURITY DEPOSIT REQUIRED

7" Touch Screen Radio, Remote Start, Wireless Charging, Power Locks, Power Windows, Power Mirrors, Bluetooth, Onstar, XM Radio & More...

36 Month Lease/10,000 Miles

**\$188\*** + Tax with \$0 Down

NO SECURITY DEPOSIT REQUIRED

**2016 SILVERADO 1LT**

NO SECURITY DEPOSIT REQUIRED

DOUBLE CAB ALLSTAR PKG 4X4

ALL STAR EDITION, Power Window & Locks 7" Touch Screen Radio, Trailer Tow, Remote Start Alum. Wheels, Backup Camera & More...

24 Month Lease/10,000 Miles

**\$158\*** + Tax with \$0 Down

NO SECURITY DEPOSIT REQUIRED

**2017 EQUINOX LT**

NO SECURITY DEPOSIT REQUIRED

7" Touch Screen, OnStar/XM Satellite Radio MYLink Touch Screen Radio, Remote Keyless Entry Rear Vision Camera, Alum. Wheels & More...

24 Month Lease/10,000 Miles

**\$183\*** + Tax with \$0 Down

NO SECURITY DEPOSIT REQUIRED

Free shuttle service to home, office or shopping.

## buff whelan chevrolet

WHERE THE DEALS MAKE THE DIFFERENCE, EVERY DAY SINCE 1970!

Van Dyke • South of 18 Mile • Sterling Heights

**Jeff Caul**  
**586-274-0396**

PEP QUOTES BY PHONE OR EMAIL: JEFF CAUL AT JCAUL@BUFFWHELAN.COM

CONVENIENT HOURS: MON. & THURS. 8:30AM-9PM / TUES., WED. & FRI. 8:30AM-6:30PM / FIND NEW ROADS

\*See dealer for details. All Rebates/Incentives have been deducted from sale price/payment and are subject to change by manufacturer without notice. GM Employee discount required unless otherwise noted. The Silverado and Malibu leases include Chevrolet Lease Loyalty. The Equinox lease assume that you qualify for lease conquest. To qualify for Lease Conquest you must have a NON-GM Lease in the household that terminates within 365 days. All lease payments are based on 10,000 miles per year. 1st payment, tax, title and plate fee due at signing on all leases unless otherwise noted. All deals expire 09/30/16.

☺ We guarantee the lowest price or it's free! ☺ We guarantee the lowest price or it's free! ☺

☺ We guarantee the lowest price or it's free! ☺ We guarantee the lowest price or it's free! ☺



# ED RINKE



**2016 BUICK REGAL**  
PREMIUM II

Stk. #B460955 Stk. #B460955

LEASE FOR <b>\$69*</b> 24 MO. \$1595 DOWN	PURCHASE FOR <b>\$24,519*</b>
---	----------------------------------

EXPERIENCE THE NEW BUICK

**2016 BUICK ENCORE**

Stk. #B564184 Stk. #B564184

LEASE FOR <b>\$99*</b> 24 MO. \$1595 DOWN	PURCHASE FOR <b>\$19,259*</b>
---	----------------------------------

**2016 BUICK VERANO**  
1SH SPORT TOURING

Stk. #B461627 Stk. #B461627

LEASE FOR <b>\$69*</b> 24 MO. \$1595 DOWN	PURCHASE FOR <b>\$17,779*</b>
---	----------------------------------

**2016 BUICK LACROSSE**  
1SH SPORT TOURING

Stk. #B460930 Stk. #B460930

LEASE FOR <b>\$159*</b> 39 MO. \$1595 DOWN	PURCHASE FOR <b>\$27,995*</b>
--	----------------------------------

**2016 BUICK CASCADA**

Stk. #B461016 Stk. #B461016

LEASE FOR <b>\$259*</b> 24 MO. \$1595 DOWN	PURCHASE FOR <b>\$31,199*</b>
--	----------------------------------

WE ARE PROFESSIONAL GRADE WE ARE PROFESSIONAL GRADE

**2016 GMC YUKON**  
SLE • 4WD

Stk. #G563840 Stk. #G563840

LEASE FOR <b>\$349*</b> 36 MONTHS \$1595 DOWN	PURCHASE FOR <b>\$46,279*</b>
---	----------------------------------

**2017 GMC ACADIA**  
SLE-1

Stk. #THW099 Stk. #THW099

LEASE FOR <b>\$199*</b> 24 MONTHS \$1595 DOWN	PURCHASE FOR <b>\$29,729*</b>
---	----------------------------------

**2016 GMC SIERRA**  
4WD • DBL. CAB ELEVATION EDITION  
GMC BUSINESS ELITE

Stk. #G561502 Stk. #G561502

LEASE FOR <b>\$139*</b> 24 MONTHS \$999 DOWN	PURCHASE FOR <b>\$31,995*</b>
--	----------------------------------

**2017 GMC TERRAIN**  
SLE-1

Stk. #G570273 Stk. #G570273

LEASE FOR <b>\$139*</b> 24 MONTHS \$1595 DOWN	PURCHASE FOR <b>\$23,995*</b>
---	----------------------------------

**SHOWROOM HOURS:**  
MON. & THURS.  
8:30AM-9PM  
TUES., WED. & FRI.  
8:30AM-6PM

We'll give you a \$3,500 minimum for your 2003 or newer trade in.

See us for your GM employee purchases.

**1-866-452-1300**

26125 VAN DYKE AT 10 1/2 MILE ROAD

Now looking for experienced salespeople to join our team!



Paul Makowski  
pmakowski@edrinke.com



Dennis Thacker  
dthacker@edrinke.com

VISIT OUR WEBSITE: [edrinke.com](http://edrinke.com)

\*All prices and payments include GM rebates. Pictures may not represent actual vehicle. Pricing subject to change per GM incentives. Prices and payments are inclusive of active GM employee discount (unless otherwise stated). All leases are 10,000 miles per year with approved S Tier credit. Acadia, Terrain, Regal, Verano and Encore are 24 months leases. Yukon and Envision are 36 month leases. Cascada and Lacrosse are 39 month leases. All Vehicles shown are \$999 down. Deposition Fee may be required at vehicle turn in. Must have lease loyalty and/or closing competitive lease. Prices and payments are plus tax, title, plate fee w/ acquisition fee up front, refundable security deposit required on certain vehicles – to be determined by lender. Pricing is subject to select model vehicles- while supplies last. \*\*\$3,500 trade in is valid on 2003 or newer vehicles w/ under 115k miles in drivable condition, no branded titles, reconditioning determined by appraiser. Certain restrictions may apply, see dealer for complete details. \*\* Exp date: 9/30/2016.

# ED RINKE



**WE'LL GIVE YOU A \$3,500 MINIMUM FOR YOUR 2003 OR NEWER TRADE IN**

**SILVERADO**  
LT • 4WD DBL CAB  
2016

Stk. #563610 Stk. #563406

LEASE FOR 24 MONTHS <b>\$89*</b> \$999 DOWN	PURCHASE FOR <b>\$29,879*</b>
---	----------------------------------

**2017 VOLT**  
LT

Stk. #570021 Stk. #570021

LEASE A LT 36 MONTHS <b>\$259*</b> \$999 DOWN	PURCHASE FOR <b>\$31,592*</b>
---	----------------------------------

**CRUZE**  
2017

Stk. #470063 Stk. #470073

LEASE A LT 24 MONTHS <b>\$149*</b> \$999 DOWN	PURCHASE A LS <b>\$18,369*</b>
---	-----------------------------------

**EQUINOX**  
LS  
2017

Stk. #570232 Stk. #570232

LEASE FOR 24 MONTHS <b>\$119*</b> \$999 DOWN	PURCHASE FOR <b>\$20,110*</b>
--	----------------------------------

**MALIBU**  
2016

Stk. #461777 Stk. #461910

LEASE A LT 36 MONTHS <b>\$139*</b> \$999 DOWN	PURCHASE A LS <b>\$19,369*</b>
---	-----------------------------------

**CAMARO**  
LT  
2016

Stk. #470040 Stk. #470040

LEASE FOR 39 MONTHS <b>\$339*</b> \$999 DOWN	PURCHASE FOR <b>\$28,329*</b>
--	----------------------------------

**TRAX**  
LS  
2016

Stk. #563963 Stk. #563963

LEASE FOR 24 MONTHS <b>\$69*</b> \$999 DOWN	PURCHASE FOR <b>\$15,869*</b>
---	----------------------------------

**TRAVERSE**  
S  
2017

Stk. #570089 Stk. #570089

LEASE FOR 24 MONTHS <b>\$159*</b> \$999 DOWN	PURCHASE FOR <b>\$26,889*</b>
--	----------------------------------

**– NO APPOINTMENTS NECESSARY FOR OIL CHANGES –**

**ED RINKE** • FAST • FRIENDLY • DISCOUNTS

Visit Our Quick Lane Certified Service

**GM SERVICE CENTER**  
MICHIGAN'S LARGEST

•SERVICE DEPT. •PARTS •BODY SHOP

**866-452-1547**

26125 Van Dyke @ 10 1/2 Mile Center Line, MI 48015

SERVICE HOURS: Monday & Thursday 6:30am-9:00pm; Tuesday, Wednesday & Friday 6:30am-6:00pm • Shuttle at 6:30am - Pick-up Both Ways • All Day starting at 6:30am.

**Quick Oil Change EXPRESS LANE**

**LUBE OIL FILTER \$23.95** Up to 5 qts.

Fluid Level, Brake & Alignment Check Included.

We use Genuine GM Oil & Filter. No additional or hidden charges. Out the door pricing.

Open Mondays & Thursdays until 8:30pm

Excludes synthetic, Diesel & Med. Duty Trucks. Most GM cars & trucks. One coupon per customer. Must present coupon with order. Plus tax. Expires 9-30-16.

**BODY SHOP**

586-754-7000 ext 1231

INSURANCE WRECK AMENDED

TRANSPORTATION AVAILABLE During Scheduled Repairs

FREE OIL CHANGE With Each Major Repair

WE REPAIR ALL MAKES & MODELS

## Tesla Challenges Michigan's Auto Dealer Law

LANSING, Mich. (AP) – Tesla sued Gov. Rick Snyder and other top state officials Sept. 22, challenging a Michigan law that ensures automakers can only sell through independent or franchise dealerships and not directly to customers.

The federal lawsuit seeks a declaratory judgment that the 2014 “anti-Tesla” law is unconstitutional and an injunction to prevent its enforcement.

The Michigan Department of State last week denied Tesla Motors Inc.'s application for a dealer license to sell to consumers, citing the law that is backed by big auto companies and their dealerships. It has not yet decided on Tesla's bid to register a vehicle repair facility in the state, home to the Detroit Three carmakers.

“The sole purpose for applying (the law) to a non-franchising manufacturer like Tesla is to insure Michigan's entrenched automobile dealers and manufacturers from competition,” the Palo Alto, Calif., company said in the suit. “This is not a legitimate government interest under the Constitution.”

Tesla said it prefers that legislation be enacted to lift the ban on direct sales but was told by legislators in June that no hearing will be held.

“As a result of this law, Michigan consumers are forced to accept reduced access to the programs they want, less competition and higher prices. . . . Tesla will continue to fight for the rights of consumers to be able to choose how they buy cars in Michigan,” Tesla Motors Inc. said in a statement.

In 2014, the Republican governor and GOP-controlled Legislature amended state law to clarify that car companies can only sell through franchised dealers. Tesla officials said it was a last-minute monopolistic strike at their upstart company, which has no traditional dealerships.

Gov. Snyder's spokesman Ari Adler said he does not comment on pending lawsuits.

“The governor is always willing to review legislation presented to him if the state Legislature change in the law is necessary,” he said.

When Snyder signed the law, he urged lawmakers to engage in a “healthy, open” discussion whether the business model in Michigan is working.

Also named in the suit are Secretary of State Ruth Johnson and Attorney General Bill Schue. Johnson spokesman Fred Woodhams said the agency followed the law in denying Tesla's dealership application.

## Lear Donates \$2.5M to WSU For Auditorium

DETROIT (AP) – Auto parts supplier Lear Corp. is giving Wayne State University \$2.5 million to help build an auditorium in the new Mike Ilitch School of Business.

Matt Simoncini, president and CEO of Southfield-based Lear, tells the *Detroit Free Press* that the university “has been a great partner to Lear.”

The Detroit university said Sept. 22 the auditorium will be named for Lear. The Mike Ilitch School of Business is scheduled to open in 2018.

Mike and Marian Ilitch last year announced a gift to help build the school near the new Red Wings arena and entertainment district. The donation included \$35 million and the use of the land for construction, as well as a \$5 million endowment.



Nicole Dodge  
nhuminski@edrinke.com



Jim Pfeifle  
jpfeifle@edrinke.com

See us for your GM employee purchases.

**1-877-451-7707**

26125 VAN DYKE AT 10 1/2 MILE ROAD

Now looking for experienced salespeople to join our team!



NO DOC FEES  
Find Us on FACEBOOK



VISIT OUR WEBSITE:  
[edrinke.com](http://edrinke.com)

SHOWROOM HOURS: MON. & THURS. 8:30AM-9PM / TUES., WED. & FRI. 8:30AM-6PM FIND NEW ROADS

\*All applicable rebates including lease loyalty, equinox loyalty or lease conquest offers have been deducted from sale price/payment. Malibu, Cruze, Equinox, Traverse, Trax and Silverado are 24 month leases. Volt is a 36 month lease. Impala and Camaro are 39 month leases. Pricing is subject to select model vehicles, while supplies last. Pictures may not represent actual vehicle. Prices subject to change per GM incentives. Prices and payments are inclusive of active GM Employee Discount (unless otherwise stated). Pricing is subject to select model vehicles while supplies last. All leases are 10k miles per year w/ approved S Tier credit w/ \$999 due at signing. Prices & payments are plus tax, title, and plate fees with acquisition fee up front. Deposition Fee may be required at vehicle turn in. Refundable security deposit required on certain vehicles – to be determined by lender. \*\*\$3500 trade-in is valid on 2003 or newer vehicles with under 115k miles in drivable condition, no branded titles, less reconditioning determined by appraiser. Certain restrictions may apply, see dealer for complete details. \*\* Expiration Date – 9/30/16.





# GM, Canadian Auto Workers Reach Tentative Agreement

by TOM KRISHER  
AP Auto Writer

DETROIT (AP) – General Motors and the Canadian auto workers union Unifor have reached a tentative contract agreement, averting a strike that was threatened for midnight Sept. 20.

Union President Jerry Dias said the deal will bring new products to the Oshawa assembly plant near Toronto and an engine plant in St. Catharines, Ontario.

Details were few at an early morning press conference in Toronto, but Dias said workers will get pay raises and lump-sum payments, and about 700 temporary employees at the plants will go full-time if the deal is ratified by members.

With the agreement, Unifor won on its most important issue, securing a future for the two Ontario factories. The deal brings an end to fears that GM would close the Oshawa plant. The three cars it makes – the Cadillac XTS, Chevrolet Impala and Buick Regal – are scheduled to go out of production in 2019.

The factory also makes the Chevrolet Equinox crossover SUV, but its production there is scheduled to end in July of next year.

“Our fear of a closure in 2019 is now over,” Dias said. “The facility clearly has a bright future.”

The agreement also is a big boost for the Canadian auto industry, which recently has seen products move to plants in the U.S. and Mexico.

GM said in a statement that the deal will bring significant new products, technology and investment to Oshawa and St. Catharines, “placing those operations at the forefront of ad-

vanced manufacturing flexibility, innovation and environmental sustainability.”

The deal was reached just before the contract expired at 11:59 p.m., Dias said. Both sides said a lot of details still must be worked out, and the company said it would release more information later.

GM will invest hundreds of millions of dollars in the Oshawa plant, according to Dias. The company said it will be working with governments on potential incentives.

Dias wouldn’t identify the new products that will be made at the Oshawa factory, but he said it would become the only GM plant capable of building both cars and trucks. The St. Catharines plant also will build more of an existing engine as General Motors moves production from Mexico, Dias said. He said employment eventually will increase at the plants.

Dias said the only thing the union gave up was a defined benefit pension plan for new hires. With 75 percent of Oshawa’s workers eligible for retirement, the company could save money by offering buyouts and replacing those workers with new hires, who would get a defined contribution plan.

That would unload a pension obligation. Dias wouldn’t comment on whether buyouts would be offered.

About 4,000 workers at the two factories had been poised to go on strike if a month of contentious talks failed to bring an agreement. Analysts had feared a long strike could have disrupted production of GM’s important small SUVs and big pickup trucks and SUVs.

END OF THE MONTH  
**SALE!**  
Now Through Fri. September 30<sup>th</sup>

**2017 EQUINOX “LS”**

- Chevrolet Complete Care **INCLUDED!**
- 2.4L DOHC Engine! • Rear Vision Camera!
- 7” Color Touch Screen MyLink Radio! • Bluetooth for Phone!
- OnStar with 4G LTE with built-in Wi-Fi hotspot!
- Remote Keyless Entry!
- Aluminum Wheels!



Was \$26,405 **Sale Price \$20,110\***

**24 MONTH LEASE:**  
**\$129\***  
\$999 DOWN

**NO SECURITY DEPOSIT REQUIRED. TAX, TITLE AND PLATE FEES EXTRA!**

**The Best Price... PERIOD!**

**ALL NEW 2016 MALIBU “LT”**

- Chevrolet Complete Care **INCLUDED!**
- 1.5L Turbo DOHC Engine! • Remote Start and Entry!
- OnStar w/4G LTE w/built-in Wi-Fi hotspot! • 17” Alloy Wheels!
- 7” Color Touch Screen MyLink Radio!
- 8 Way Power Driver’s Seat!
- Rear Vision Camera!



Was \$26,850 **Sale Price \$20,899\***

**36 MONTH LEASE:**  
**\$149\***  
\$999 DOWN

**NO SECURITY DEPOSIT REQUIRED. TAX, TITLE AND PLATE FEES EXTRA!**

**The Best Price... PERIOD!**

**FINAL WEEK to Get Great Deals on EVERY New Chevy In Stock!\***

**2016 TRAX “LS”**

- Chevrolet Complete Care **INCLUDED!**
- ECOTEC 1.4L “Turbo” DOHC VVT Engine! • Remote Keyless Entry!
- OnStar with 4G LTE with built-in Wi-Fi hotspot! • Rear Camera!
- 7” Color Touch Screen Radio w/Bluetooth!
- USB Port and Auxiliary Input Jack!
- Bluetooth for Phone!



Was \$21,195 **Sale Price \$15,999\***

**24 MONTH LEASE:**  
**\$79\***  
\$999 DOWN

**16% BONUS TAG**

**The Best Price... PERIOD!**

**2017 CRUZE “LT”**

- Chevrolet Complete Care **INCLUDED!**
- 1.4L Turbo DOHC Engine! • Automatic Transmission!
- OnStar w/4G LTE w/built-in Wi-Fi hotspot! • Rear Vision Camera!
- 7” Color Touch Screen MyLink Radio!
- Remote Keyless Entry!
- Bluetooth for Phone!



Was \$22,325 **Sale Price \$18,599\***

**24 MONTH LEASE:**  
**\$159\***  
\$999 DOWN

**24/7 PROMISE**

**The Best Price... PERIOD!**

**MORAN CHEVROLET**  
moranchevy.com  
(586) 791-1010

**Where You Always Get...**  
  
**RICH MILNE**  
rmilne@moranautomotive.com

**35500 S. Gratiot Ave. / North of 15 Mile / Clinton Township** / **CHEVROLET COMPLETE CARE** / **FIND NEW ROADS**

\*Pictures may not represent actual sale vehicle. All applicable incentives including competitive lease, lease conquest or lease loyalty offers have been deducted from Sale Prices/Payments and are subject to change by the manufacturer without notice and are plus title, tax, plate and CVR fees and were valid at time of printing. GM employee discount required except where noted. Leases are 10,000 miles per year and a disposition fee may be required at lease turn in. Silverado is previous dealer courtesy transportation vehicle with approximately 2500 miles. \$2500 minimum trade-in guarantee is for 2004 or newer vehicles with 150,000 or less in drivable condition when you purchase or lease 2016 vehicle out of dealer stock. No branded titles. Certain restrictions apply, see dealer for complete details on all incentives/offers. Sale ends 9/30/2016 @ 6:00PM.

**CHEVROLET**



**2016 BUICK REGAL TURBO**  
MSRP \$30,450 | LEASE FOR **\$99\*** PER MONTH  
24 Months \$999 Due at Signing  
**SALE PRICE \$21,878**



**2016 BUICK VERANO - SPORT TOURING PACKAGE**  
MSRP \$26,125 | LEASE FOR **\$109\*** PER MONTH  
24 Months \$999 Due at Signing  
**SALE PRICE \$17,799**



**2016 BUICK ENCORE BASE FWD**  
MSRP \$25,385 | LEASE FOR **\$139\*** PER MONTH  
24 Months \$999 Due at Signing  
**SALE PRICE \$19,142**



**2016 GMC TERRAIN SLE1 FWD**  
MSRP \$28,455 | LEASE FOR **\$119\*** PER MONTH  
24 Months \$999 Due at Signing  
**SALE PRICE \$32,249**



**2016 GMC SIERRA DOUBLE CAB SLE 4WD 1500**  
MSRP \$43,115 | LEASE FOR **\$149\*** PER MONTH  
24 Months \$999 Due at Signing  
**SALE PRICE \$32,249**

**38000 Grand River Ave. | Farmington Hills, MI 48335 | 888-502-4098 | SellersBuickGMC.com**

Must qualify for GM Employee Purchase Program (GMS/GEX) and have a non-GM lease (1999 or newer) in household that expires within 365 days from date of new lease. Plus tax, title, license, CVR, and doc fees. Includes Acquisition Fee. No security deposit. 10K miles/yr Lease. AMOUNT DUE INCLUDES 1ST PAYMENT. Must take retail delivery by 9/30/16. Offer available only on select models. See dealer for details.



**SELLERS**  
REPUTATION IS EVERYTHING



Receive a

**\$100** rebate on the purchase of **4** tires!

\*See dealer for details and rebate form, which must be postmarked by 12/31/16. Allow 6-8 weeks for delivery of debit card. Offer valid 9/1/16-11/30/16.

(select brands)

**BRIDGESTONE** **Continental**

**GOODYEAR** **HANKOOK**

**PIRELLI**

**BUICK CERTIFIED SERVICE**

SP65185

# There's a new player in town

## Ray Laethem Buick-GMC

**Lowest lease prices on like-new 2016 Buick Regal and Verano demos**  
(Over 70 like-new CTP vehicles to choose from. Call 313 881-6700 for availability.)



2016 Buick Verano Sport Touring

MSRP . . . . .	\$25,400
MINUS: GMS PRICE ADJUSTMENT . . . . .	-\$1,700
MINUS: LAETHEM PEP PRICE ADJUSTMENT . . . . .	-\$3,055
MINUS: REBATES . . . . .	-\$3,960

**RAY LAETHEM'S**  
**GM Employee Lease** **\$59<sup>\*/24 MO</sup>**



2016 Buick Regal Premium II

MSRP . . . . .	\$32,490
MINUS: GMS PRICE ADJUSTMENT . . . . .	-\$2,255
MINUS: LAETHEM PEP PRICE ADJUSTMENT . . . . .	-\$3,360
MINUS: REBATES . . . . .	-\$5,960

**RAY LAETHEM'S**  
**GM Employee Lease** **\$69<sup>\*/24 MO</sup>**

## Lowest lease prices on brand new 2016 GMC Sierras and Yukons



2016 GMC Sierra 4WD Double Cab SLE

MSRP . . . . .	\$44,290
MINUS: GMS PRICE ADJUSTMENT . . . . .	-\$4,450
MINUS: LAETHEM PRICE ADJUSTMENT . . . . .	-\$3,276
MINUS: REBATES . . . . .	-\$4,400

**RAY LAETHEM'S**  
**GM Employee Lease** **\$129<sup>\*/24 MO</sup>**



2016 GMC Yukon SLE

MSRP . . . . .	\$53,785
MINUS: GMS PRICE ADJUSTMENT . . . . .	-\$5,456
MINUS: LAETHEM PRICE ADJUSTMENT . . . . .	-\$6,170
MINUS: REBATES . . . . .	-\$1,500

**RAY LAETHEM'S**  
**GM Employee Lease** **\$275<sup>\*/36 MO</sup>**

**PLEASE READ THIS CAREFULLY:**

\* PEP/CTP pricing is plus tax, title, plate, CVR, and doc fee. Leases include 10,000 miles per year. Payments are plus 6% use tax. Amount due at lease signing includes: \$1,595 down payment, 1<sup>st</sup> payment, tax, title, license, CVR and doc fee. ALL PAYMENTS INCLUDE DESTINATION AND ACQUISITION. Requires GM employee discount & must be actual employee with ID (not relative) with GM Voucher of \$1000. Pricing for Michigan residents only. Picture may not represent actual vehicle. Payments include either competitive lease conquest or lease loyalty incentive. Payments based on Tier 1 credit approval. Subject to prior sale or changes in manufacturer programs. CTP. Prices good through 09/30/2016.

**RAY LAETHEM**  
**MOTOR VILLAGE**



17677 Mack Avenue,  
Grosse Pointe-Detroit, MI 48224  
between Cadieux and Moross Roads  
313 886 1700, [www.laethemgm.com](http://www.laethemgm.com)

