

# Special Museum Day Slated For Hickory Corners – Free

Gilmore Car Museum in Hickory Corners, Mich., will open its doors free of charge on Saturday, Sept. 28, as part of Smithsonian Magazine's Ninth Annual Museum Day Live!

Jay Follis, director of marketing for the Gilmore Car Museum, said Museum Day Live! is a nationwide event that offers free admission to visitors presenting a Museum Day Live! ticket at any participating museum or cultural institution.

Museum Day Live! represents Smithsonian's commitment to make learning and the spread of knowledge accessible to everyone, Follis said. Last year's event drew more than 400,000 visitors to participating museums across the United States.

"We are pleased to be participating in this nationwide affair once again," said Gilmore Car Museum Executive Director Michael Spezia. "Last year, the museum welcomed nearly 200 visitors as part of the Museum Day Live! event and we look forward to another successful experience this year, committed to

making the heritage of the American automobile accessible to everyone, free of charge."

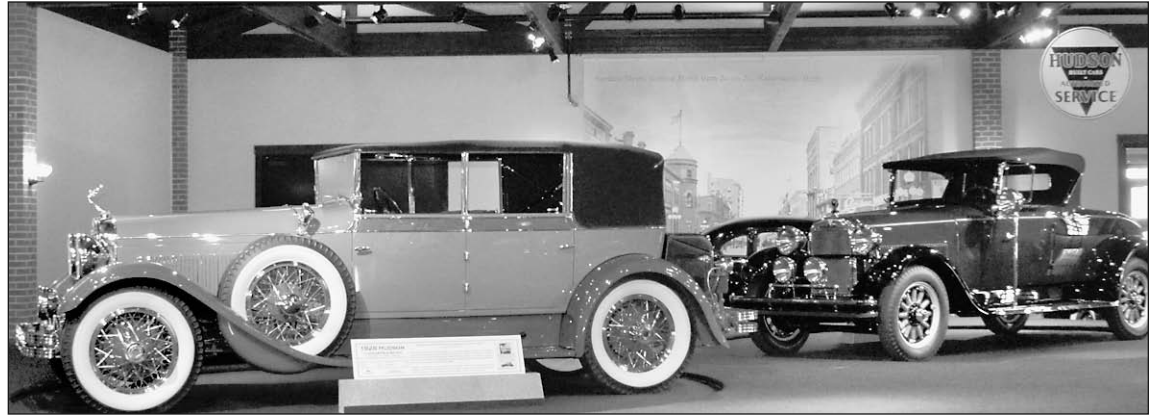
The Gilmore Car Museum has been named one of the nation's top five car museums and was recently listed as Michigan's number one "Greatest Historic Auto Attraction" by Pure Michigan, Follis said.

The museum allows attendees to view nearly 400 vintage and collector vehicles and motorcycles from all eras, all on display in more than a dozen vintage buildings and located on a 90-acre historic campus.

Exhibits range from the early cars of the 1890s to "American Legends: Hot Rods & Customs" to automobiles built in the "Other Motor City – Kalamazoo."

Gilmore is also the largest museum ever dedicated solely to the Model A Ford. It also features an elusive 1948 Tucker, a vintage Pedal Car, and Walt Disney Studio's "Gnome-Mobile," Follis said. Visitors also can eat lunch in an authentic 1941 diner.

And, there's a re-creation of a 1930s Shell Gas Station, where



Hudson cars may be gone but not forgotten at the Gilmore Car Museum.

gas is always 18 cents a gallon. The Museum Day Live! ticket is now available for download at Smithsonian.com/MuseumDay.

Visitors who present the Museum Day Live! ticket at the Gilmore Car Museum on Sunday, Sept. 28, will gain free admission for two people for that day only. One ticket is permitted per household, per email address.

For more information about Museum Day Live! 2013 and a list of participating museums and cultural institutions, visit Smithsonian.com/MuseumDay.

The Gilmore Car Museum is located just 20 minutes northeast of Kalamazoo on M-43 and Hickory Road.



The Gilmore Car Museum shows off classic hot rods

## Spark EV 'A Kick in the Pants' to Drive

"A hoot to drive," says the web site, "Autoblog." "Spunky" says *Car and Driver* magazine. And "fun," says the web site, "engadget."

All these car reviewers are talking about the 2014 Chevrolet Spark EV.

With 130 hp and 400 lb.-ft. of instant torque, the all-electric mini-car can go from 0 to 60 in less than 7.6 seconds, according to a GM spokesperson.

"Spark EV is the new benchmark for electric cars aimed at urban driving and a kick in the pants to pilot around town," said Lindsay Brooke, senior editor, SAE International magazines.

"Spark EV owners who are new to all-electric driving will soon find out how difficult it is to hide their silly grin when they realize how far that car will take them for pennies on the dollar."

For many Spark EV owners, getting plugged in to an all-electric, no-gas-required lifestyle will be a new experience.

GM spokesperson Annalisa Bluhm said the automaker consulted with EV users on Facebook as well as with experts on how Spark drivers can get the most out of their vehicles.

She provided these tips to ease the transition:

- Recharge daily – And do it quicker with the soon-to-be available SAE combo charger for DC fast-charging. It can recharge the 21-kWh lithium-ion battery pack to 80 percent capacity in 20 minutes;

- Extend range – Maximize the mini-car's EPA-estimated 82 miles (130 km) of driving range by recharging in public charging stations, or use Spark EV's standard 120V cord in any outlet;

- Don't be a juice hog – Public

charging stations are in high demand. After charging, move on so that other EV owners can recharge. Or if parking conditions allow, place a note on your dashboard saying it's okay to unplug your car if the Green Light indicating a full charge is flashing;

- Know the distance – The available BringGo smartphone app can help Spark EV owners know how far they can go without recharging by providing full-function, in-dash navigation via Chevrolet MyLink as well as live traffic updates, for less than \$60.

- Go with the flow – Many EV owners like to maximize range by driving at or below the speed limit. No problem, just steer clear of the fast lane so other Spark EV drivers can enjoy their instant torque;

- Be loud – The Pedestrian Friendly Alert Function projects a light chirp and calls attention to Spark EV's presence. Pulling the turn signal lever back while in Drive will give a friendly honk. The alert can be set to activate automatically in Drive and Reverse at speeds below 18 mph;

- Enjoy the savings – Spark EV can save its owners approximately \$9,000 in fuel over five years compared with the average new vehicle – that's \$150 per month that can be spent on something else;

- Be an EV advocate – Expect to get lots of questions about Spark EV. Take these opportunities to spread the advantages of going gas-free.

Bluhm said GM is expanding the Spark lineup and that the 2014 Chevrolet Spark EV is "designed to make the trip as electrifying as the destination."

It's priced under \$19,995 with tax incentives and is now avail-



2014 Chevy Spark EV

able to residents in California and Oregon, with sales expanding to Canada, South Korea and Europe later.

## BorgWarner Building New Facility

Auburn Hills-based BorgWarner is going to build a new facility in Viana do Castelo, Portugal.

In a public statement, the company said that expanded production capacity will allow BorgWarner to efficiently serve customers with several environmentally friendly technologies such as exhaust gas recirculation (EGR) coolers and EGR tubes as well as glow plug control modules, all key technologies for modern engines aimed

at reducing emissions.

A spokesman said the construction of its new plant in Portugal is part of BorgWarner's strategy to expand production of its diesel cold-start technologies while meeting growing demand for the EGR technologies currently produced at the company's Valenca plant.

The company plans to gradually transfer current production to Viana do Castelo with completion by early 2015.

For One Week Only!...EVERYONE Pays the Same Low Price!

**The Best Price... PERIOD!**

Where You Always Get... **NO EMPLOYEE DISCOUNT REQUIRED!**

Use Your GM Card Earnings AND Bonus Earnings to Save Even More!

<div style="text-align: center;"> <h3>2014 SONIC "LT"</h3> <p><b>NO EMPLOYEE DISCOUNT REQUIRED!</b></p> <ul style="list-style-type: none"> <li>• 2 Yr/24,000 Scheduled Maintenance INCLUDED!</li> <li>• ECOTEC 1.8L DOHC Engine!</li> <li>• Automatic Transmission!</li> <li>• Power Locks/Windows!</li> <li>• AM/FM/XM Radio w/CD!</li> <li>• Remote Keyless Entry!</li> <li>• Aluminum Wheels!</li> <li>• 35 MPG on the highway!</li> </ul> <p>Stk. #E14412 MSRP \$18,150</p> <p>NO SECURITY DEPOSIT REQUIRED!</p> <p><b>Starting At! \$17,289</b></p> <p><b>Lease for Only! \$159</b></p> <p><i>Just \$999 Down</i></p> </div>	<div style="text-align: center;"> <h3>2014 CRUZE "LT"</h3> <p><b>NO EMPLOYEE DISCOUNT REQUIRED!</b></p> <ul style="list-style-type: none"> <li>• 2 Yr/24,000 Scheduled Maintenance INCLUDED!</li> <li>• ECOTEC Turbo 1.4L Engine!</li> <li>• Automatic Transmission!</li> <li>• Power Locks/Windows!</li> <li>• AM/FM/XM Radio w/CD!</li> <li>• Remote Keyless Entry!</li> <li>• Aluminum Wheels!</li> <li>• 38 MPG on the highway!</li> </ul> <p>Stk. #E13599 MSRP \$20,695</p> <p>NO SECURITY DEPOSIT REQUIRED!</p> <p><b>Starting At! \$18,530</b></p> <p><b>Lease for Only! \$159</b></p> <p><i>Just \$999 Down</i></p> </div>
<div style="text-align: center;"> <h3>2014 TRAVERSE "LS"</h3> <p><b>NO EMPLOYEE DISCOUNT REQUIRED!</b></p> <ul style="list-style-type: none"> <li>• 2 Yr/24,000 Scheduled Maintenance INCLUDED!</li> <li>• 3.6L SIDI V6 Engine!</li> <li>• Automatic Transmission!</li> <li>• Bluetooth for Phone!</li> <li>• Power Locks/Windows!</li> <li>• AM/FM/XM Radio w/CD!</li> <li>• Remote Keyless Entry!</li> <li>• 24 MPG! on the highway!</li> </ul> <p>Stk. #E13616 MSRP \$31,670</p> <p>NO SECURITY DEPOSIT REQUIRED!</p> <p><b>Starting At! \$27,999</b></p> <p><b>Lease For Only! \$229</b></p> <p><i>Just \$999 Down</i></p> </div>	<div style="text-align: center;"> <h3>ALL NEW 2014 IMPALA "LS"</h3> <p><b>NO EMPLOYEE DISCOUNT REQUIRED!</b></p> <ul style="list-style-type: none"> <li>• 2 Yr/24,000 Scheduled Maintenance INCLUDED!</li> <li>• #1 Rated Sedan by "Consumer Reports!"</li> <li>• ECOTEC 2.5L DOHC Engine!</li> <li>• Automatic Transmission!</li> <li>• Power Locks/Windows!</li> <li>• AM/FM/XM/HD Audio System!</li> <li>• 18" Aluminum Wheels!</li> <li>• 31 MPG! on the highway!</li> </ul> <p>Stk. #E27286 MSRP \$27,730</p> <p>NO SECURITY DEPOSIT REQUIRED!</p> <p><b>Starting At! \$25,757</b></p> <p><b>Lease For Only! \$229</b></p> <p><i>Just \$999 Down</i></p> </div>

Picture may not represent actual sale vehicle. All applicable rebates and various private offers have been deducted from Sale Price/Payment and are subject to change by the manufacturer without notice. Employee pricing to everyone is available on 2014 Sonic, 2014 Cruze, 2014 Impala, 2014 Traverse from dealer stock. Prices/Payments are plus tax, title and plates. All leases are 10,000 miles per year, Cruze is 36 months, Sonic, Impala, Traverse are 39 months and are plus title, tax and plates. \$3500 trade-in guarantee is for 2003 or newer vehicles in drivable condition with under 115,000 actual miles. No Branded or Salvage titles. Certain Restrictions may apply. Sale ends 9/30/2013 @ 6:00PM

**We Need Your Trade!... We'll Give You A Minimum of \$3500... GUARANTEED!**

**The Best Price... PERIOD!**

35500 S. Gratiot Ave.  
Clinton Township, MI. 48035  
**(586)-791-1010**

**MICHELLE MONTELEONE**  
mmonteleone@moranauto.com

**RICH MILNE**  
rmilne@moranauto.com

**MORANCHEVY.COM**

4511 24th Ave.  
Fort Gratiot, MI. 48059  
**(810)-385-8500**

## TRW Introduces New Video Camera

TRW Automotive in early September unveiled a new generation of video camera (S-CAM 3), which offers six times the processing power of the current generation to provide a higher level of performance and several advanced new functions.

The camera will be launched early in 2015 and featured on a number of 2016 model year applications.

Peter Lake, executive vice president, Sales and Business Development for TRW Automotive, said: "In the coming five to 10 years, we expect to see a strong demand for camera systems –

driven mainly by governments and organizations worldwide that are striving to enhance vehicle safety."

Lake said TRW is investing in its camera production sites – both in North America and in Europe. The company started production of its first-generation camera in 2008 on the European Lancia Delta and launched its second generation camera (S-Cam) in 2011. By late 2013, the current second-generation S-Cam will be available on vehicles from five major vehicle manufacturers in the North American, European and Asian markets.